

STANDARD DEPARTURE CHART
INSTRUMENT (SID) - ICAO

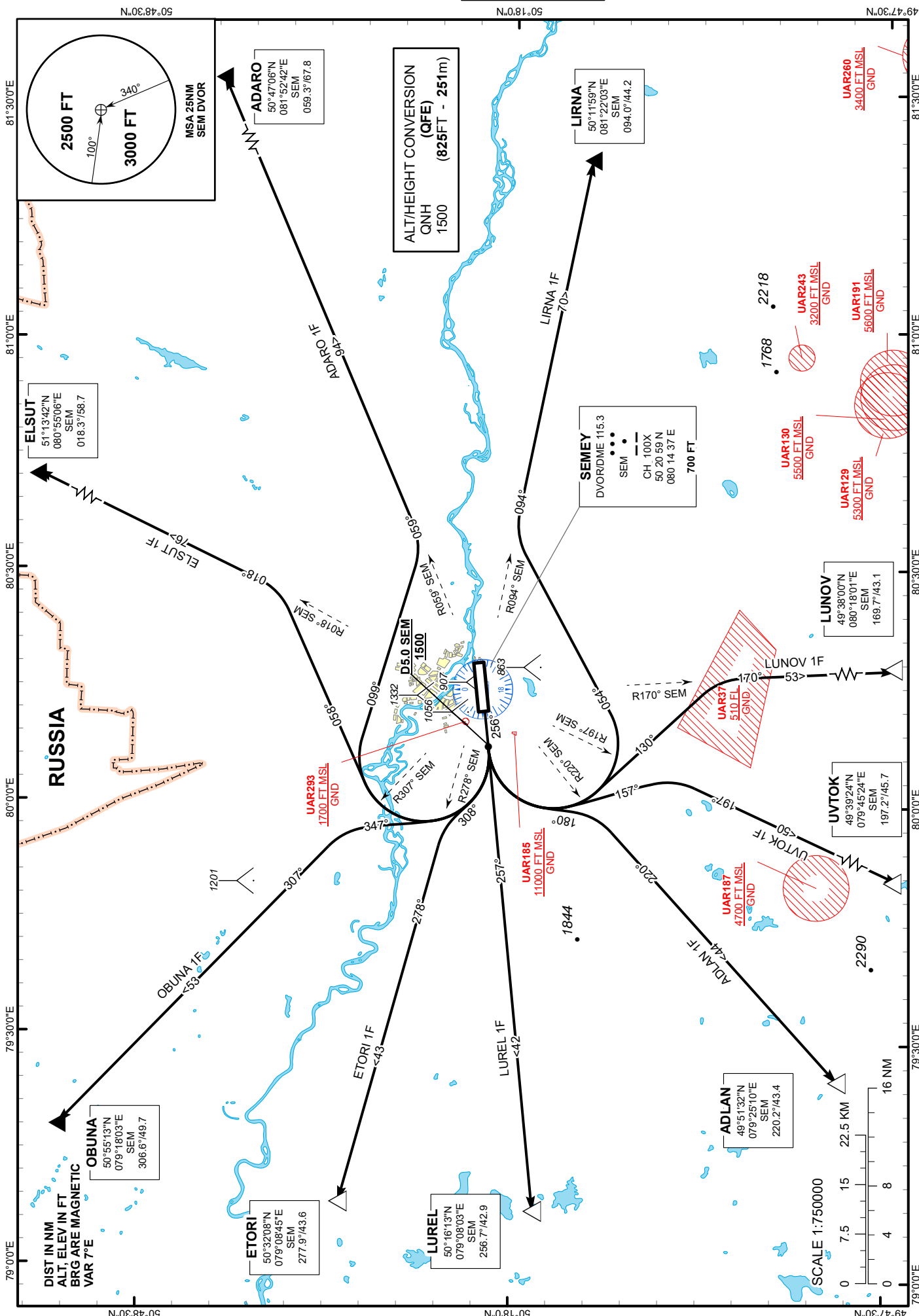
TRANSITION ALTITUDE
10000 FT

SEMEY TOWER 128.0
SEMEY ATIS (EN) 118.5
SEMEY ATIS (RU) 122.4

ADARO 1F, ADLAN 1F, ELSUT 1F,
ETORI 1F, LIRNA 1F, LUNOV 1F,
OBUNA 1F, LUREL 1F, UVTOK 1F

SEMEY
RWY 26

CHANGE: Renumbered.



STANDARD DEPARTURE ROUTES - INSTRUMENT (SID) SEMEY RWY 26
OBUNA 1F After take-off climb straight ahead to 1500 FT or above. At 5.0NM SEM turn RIGHT on track 347° until intercept R307° SEM, then proceed on track 307° to OBUNA (R306.6° D49.7NM SEM).
ELSUT 1F After take-off climb straight ahead to 1500 FT or above. At 5.0NM SEM turn RIGHT on track 058° until intercept R018° SEM, then proceed on track 018° to ELSUT (R018.3° D58.7NM SEM).
ADARO 1F After take-off climb straight ahead to 1500 FT or above. At 5.0NM SEM turn RIGHT on track 099° until intercept R059° SEM, then proceed on track 059° to ADARO (R059.3° D67.8NM SEM).
LIRNA 1F After take-off climb straight ahead to 1500 FT or above. At 5.0NM SEM turn LEFT on track 054° until intercept R094° SEM, then proceed on track 094° to LIRNA (R094.0° D44.2NM SEM).
LUNOV 1F After take-off climb straight ahead to 1500 FT or above. At 5.0NM SEM turn LEFT on track 130° until intercept R170° SEM, then proceed on track 170° to LUNOV (R169.7° D43.1NM SEM).
UVTOK 1F After take-off climb straight ahead to 1500 FT or above. At 5.0NM SEM turn LEFT on track 157° until intercept R197° SEM, then proceed on track 197° to UVTOK (R197.2° D45.7NM SEM).
ADLAN 1F After take-off climb straight ahead to 1500 FT or above. At 5.0NM SEM turn LEFT on track 180° until intercept R220° SEM, then proceed on track 220° to ADLAN (R220.2° D43.4NM SEM).
LUREL 1F After take-off climb straight ahead to 1500 FT or above. At 5.0NM SEM proceed on track 257° to LUREL (R256.7° D42.9NM SEM).
ETORI 1F After take-off climb straight ahead to 1500 FT or above. At 5.0NM SEM turn RIGHT on track 308° until intercept R278° SEM, then proceed on track 278° to ETORI (R277.9° D43.6NM SEM).